



GAT MONTHLY MEMBERSHIP PROGRESS REPORT

Results as of: 4/30/2022

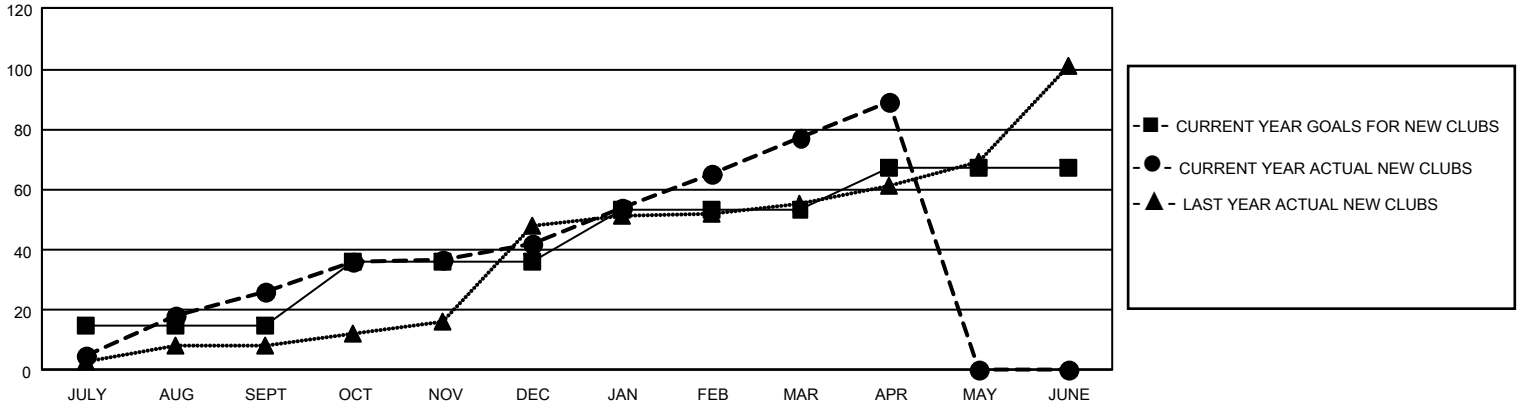
GAT Constitutional Area 5 - English Speaking Areas

REPORT DOES NOT INCLUDE CLUBS IN UNDISTRICTED AREAS.

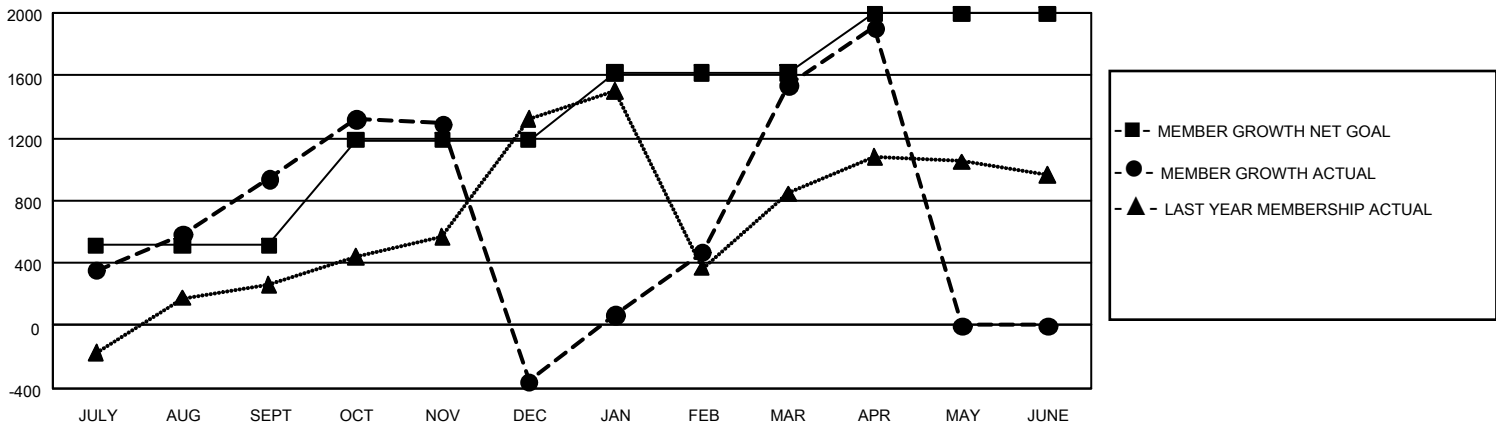
Clubs			
RESULTS FOR 2021-2022			
QUARTER	NEW CLUB GOAL	NEW CLUBS	DROPPED CLUBS
JULY/AUG/SEPT	45	26	20
OCT/NOV/DEC	63	16	42
JAN/FEB/MAR	51	35	11
APR/MAY/JUNE	42	12	1

Members			
RESULTS FOR 2021-2022			
QUARTER	MEMBER GROWTH NET GOAL	MEMBER GROWTH ACTUAL	DROPPED MEMBERS ACTUAL (including transfers)
JULY/AUG/SEPT	512	2,019	994
OCT/NOV/DEC	675	1,395	2,620
JAN/FEB/MAR	430	3,077	756
APR/MAY/JUNE	377	710	262

GOALS AND ACTUAL NEW CLUBS CUMULATIVE



GOALS AND ACTUAL MEMBERS CUMULATIVE



DROPPED CLUBS: 74	
DROPPED MEMBERS	
DECEASED	187
CLUB CANCELLED	1,410
OTHER	3,051
TOTAL	4,648

759 CLUBS OF 1,335 ADDED 1 OR MORE NEW MEMBERS

[CLICK HERE FOR CUMULATIVE MEMBERSHIP DATA](#)

GENDER DISTRIBUTION	
MALE	21,735 (55.20%)
FEMALE	17,629 (44.77%)
NON BINARY	0 (0.00%)
PREFER NOT TO ANSWER	11 (0.03%)
TOTAL FAMILY UNIT MEMBERS	9,446
FAMILY MEMBERS PAYING HALF DUES	5,792